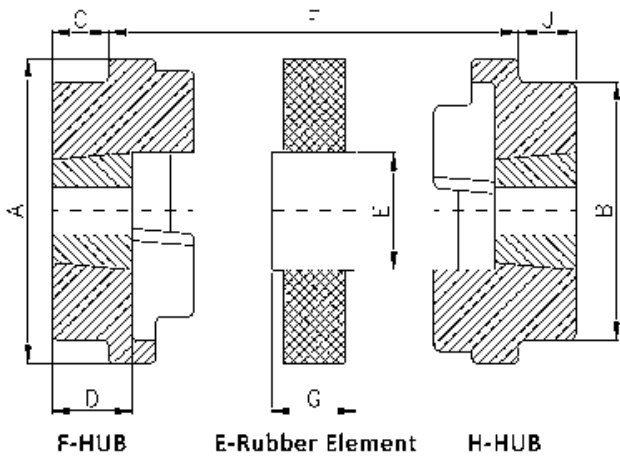


Octaforce HRC/OC Couplings



Coupling Size	E-Rubber	F-Hub	H-Hub	Bush Size	Bore Size	A	B	C	D	E	F	G	J	Weight (Kgs)	Torque Nom (Nm)	Torque Max (Nm)	RPM Max	Axial	Misalignment Radial	Angular	Bore d	Inertia (gm ²) Bus hed
7	HRC/OC 70 E	HRC/OC 70 F	HRC/OC 70 H	1008	9-25	69	60	20	24	31	25	18	29	1	33	73	7700	0.2	0.3	0.5	0.85	0.78
9	HRC/OC 90 E	HRC/OC 90 F	HRC/OC 90 H	1108	9-28	85	70	19.5	23.5	32	30.5	23	29	1.2	84	185	6300	0.5	0.3	0.5	1.15	1.08
11	HRC/OC 110 E	HRC/OC 110 F	HRC/OC 110 H	1610	14-42	112	100	18.5	26.5	45	45	29	38	4.5	168	370	5000	0.6	0.3	1	4	3.44
13	HRC/OC 130 E	HRC/OC 130 F	HRC/OC 130 H	1610	14-42	130	105	18	26.5	50	54	36	38	5	331	728	4100	0.8	0.4	1	7.8	8.5
15	HRC/OC 150 E	HRC/OC 150 F	HRC/OC 150 H	2012	14-50	150	115	23.5	33.5	62	61	40	42	7	630	1490	3600	0.9	0.4	1.5	18.1	21.12
18	HRC/OC 180 E	HRC/OC 180 F	HRC/OC 180 H	2517	16-65	180	125	34.5	46.5	77	74	49	48	16.5	998	2300	3000	1.1	0.4	1.5	43.4	48.2
23	HRC/OC 230 E	HRC/OC 230 F	HRC/OC 230 H	3020	25-75	225	155	39.5	52.5	99	85.5	60	55	25	2100	4800	2600	1.3	0.5	2	120.68	140.52
28	HRC/OC 280 E	HRC/OC 280 F	HRC/OC 280 H	3525	35-90	275	206	51	66.5	119	105.5	75	67	48	3308	7000	2200	1.7	0.5	2.5	446.53	547.9

HRC/OC Coupling, B Type (Non Taperlock)



Coupling Size	E-Rubber	B-Hub	Max-Bore	A	B	C	D	E	F	G	Weight (Kgs)	Torque Nom (Nm)	Torque Max (Nm)	RP M Max	Axial	Misalignment Radial	Angular	Bore d	Inertia (gm ²) Bushed
7	HRC/OC 70 E	HRC/OC 70 B	32	69	60	20	23.5	31	25	18	1.1	33	73	7700	0.2	0.3	0.5	0.85	0.78
9	HRC/OC 90 E	HRC/OC 90 B	42	85	70	26	30	32	31	23	1.4	84	185	6300	0.5	0.3	0.5	1.15	1.08
11	HRC/OC 110 E	HRC/OC 110 B	55	112	100	37	45	45	45	29	7.1	168	370	5000	0.6	0.3	1	4	3.44
13	HRC/OC 130 E	HRC/OC 130 B	60	130	105	47	55.5	50	53	36	7.9	331	728	4100	0.8	0.4	1	7.8	8.5
15	HRC/OC 150 E	HRC/OC 150 B	70	150	115	50	60	62	60	40	10.1	630	1490	3600	0.9	0.4	1.5	18.1	21.12
18	HRC/OC 180 E	HRC/OC 180 B	80	180	125	58	70	77	73	49	23.7	998	2300	3000	1.1	0.4	1.5	43.4	48.2
23	HRC/OC 230 E	HRC/OC 230 B	100	225	155	77	90	99	86	60	37.5	2100	4800	2600	1.3	0.5	2	120.68	140.52
28	HRC/OC 280 E	HRC/OC 280 B	130	275	206	90	106	119	106	75	71.7	3308	7000	2200	1.7	0.5	2.5	446.53	547.9